

A

We say that somebody/something is:

Int/Adv

in a line / in a row / in a queue
 in the sky / in the world
 in an office / in a department
 in a book / in a paper (= newspaper) / in a magazine / in a letter

in bed
 in the country / in the countryside
 in a picture / in a photo / in a photograph

- ☐ When I go to the cinema, I like to sit **in the front row**.
- ☐ James isn't up yet. He's still **in bed**.
- ☐ It was a lovely day. There wasn't a cloud **in the sky**.
- ☐ I've just started working **in the sales department**.
- ☐ Who is the woman **in that photo**?
- ☐ Have you seen this picture **in today's paper**?



in a row

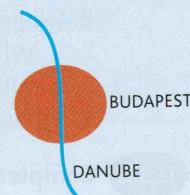
B

on the left / on the right on the left-hand side / on the right-hand side
 on the ground floor / on the first floor / on the second floor etc.
 on a map / on a menu / on a list
 on a farm

- ☐ In Britain we drive **on the left**. or ... **on the left-hand side**.
- ☐ Our apartment is **on the second floor** of the building.
- ☐ Here's a shopping list. Don't buy anything that's not **on the list**.
- ☐ Have you ever worked **on a farm**?

We say that a place is **on a river / on a road / on the coast**:

- ☐ Budapest is **on the** (river) **Danube**.
- ☐ The town where you live – is it **on the coast** or inland?

Also **on the way**:

- ☐ We stopped to buy some things in a shop **on the way** home.

C

at the top (of) / at the bottom (of) / at the end (of)

- ☐ Write your name **at the top of the page**.
- ☐ Jane's house is **at the other end of the street**.

at the top (of the page)**at the bottom (of the page)**

D

in the front / in the back of a car

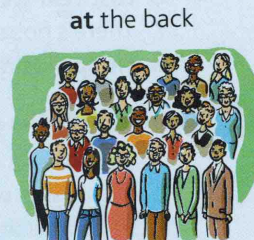
- ☐ I was sitting **in the back** (of the car) when we crashed.

at the front / at the back of a building / theatre / group of people etc.

- ☐ The garden is **at the back of the house**.
- ☐ Let's sit **at the front** (of the cinema).
- ☐ We were **at the back**, so we couldn't see very well.

on the front / on the back of a letter / piece of paper etc.

- ☐ I wrote the date **on the back of the photo**.



at the back

at the front

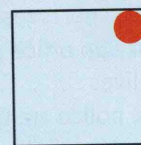
E

in the corner of a room

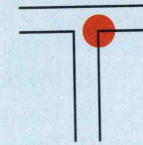
- ☐ The TV is **in the corner** of the room.

at the corner or on the corner of a street

- ☐ There is a small shop **at/on the corner** of the street.

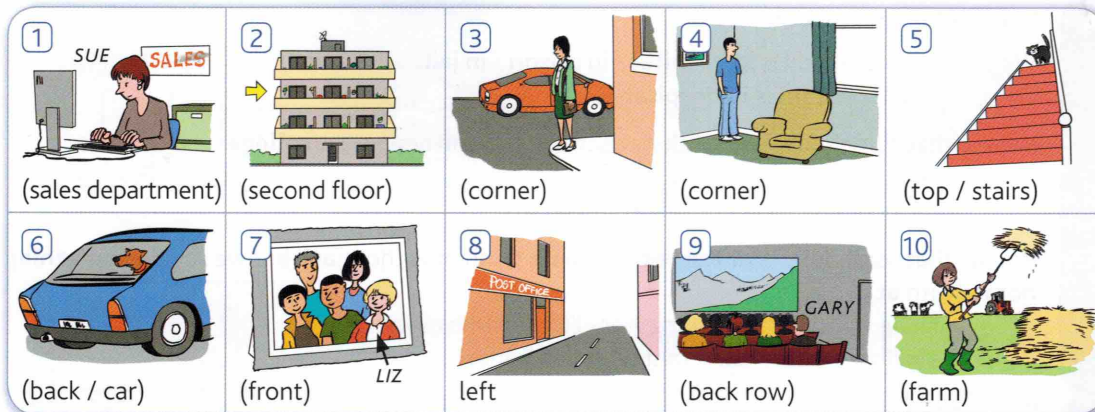


in the corner



at/on the corner

124.1 Answer the questions about the pictures. Use **in**, **at** or **on** with the words below the pictures.



- 1 Where does Sue work? In the sales department.
- 2 Sue lives in this building. Where's her flat exactly?
- 3 Where is the woman standing?
- 4 Where is the man standing?
- 5 Where's the cat?
- 6 Where's the dog?
- 7 Liz is in this group of people. Where is she?
- 8 Where's the post office?
- 9 Gary is at the cinema. Where is he sitting?
- 10 Where does Kate work?

124.2 Complete the sentences. Use **in**, **at** or **on** + the following:

the west coast
the front row

the world
the right

the back of the class
the back of this card

~~the sky~~
the way to work

- 1 It was a lovely day. There wasn't a cloud in the sky.
- 2 In most countries people drive
- 3 What is the tallest building ?
- 4 I usually buy a newspaper in the morning.
- 5 San Francisco is of the United States.
- 6 We went to the theatre last night. We had seats
- 7 I couldn't hear the teacher. She spoke quietly and I was sitting
- 8 I don't have your address. Could you write it ?

124.3 Complete the sentences with **in**, **at** or **on**.

- 1 Write your name at the top of the page.
- 2 Is your sister this photograph? I don't recognise her.
- 3 I didn't feel very well when I woke up, so I stayed bed.
- 4 We normally use the front entrance to the building, but there's another one the back.
- 5 Is there anything interesting the paper today?
- 6 There was a list of names, but my name wasn't the list.
- 7 the end of the street, there is a path leading to the river.
- 8 I love to look up at the stars the sky at night.
- 9 When I'm a passenger in a car, I prefer to sit the front.
- 10 I live in a very small village. You probably won't find it your map.
- 11 Joe works the furniture department of a large store.
- 12 Paris is the river Seine.
- 13 I don't like cities. I'd much prefer to live the country.
- 14 My office is the top floor. It's the left as you come out of the lift.